

Dynalite



CONTROL PRODUCTS CATALOGUE



dynalite-online.com
2006

THE INTELLIGENT PRODUCT RANGE

Dynalite enjoys an international reputation for quality product, service and support, and as a leading solutions provider for difficult and challenging projects.



Our Philosophy

Dynalite is a highly specialised company whose principal occupation is to provide 'cutting edge' solutions for lighting control.

Our philosophy is to provide the best solution possible for each and every project and this has been the key to our success. Our considerable investment in Research & Development ensures we remain at the forefront of our industry and our position as a world leader in lighting management systems of the future will be sustained through our total commitment to innovation.

We are represented around the world by distributors and dealers who are hand picked for their ability to provide the highest possible level of service.

CONTENTS

Dynalite Control Products Catalogue

The Dynalite range of controller and companion products delivers a versatile system that can be tailored to meet the specific needs of any application.

This product catalogue is designed to give the reader an overview of general product functionality. For in-depth technical information on a specific product, request a copy of the data sheet from your Dynalite dealer, or download from the product pages at dynalite-online.com.

User Interfaces

Dynalite offer a vast range of user interfaces, from control panels to suit any budget and match any décor, to touch screens, timeclocks, sensors, remote controls and more.

Leading Edge Dimmers

Dimmers for regulating lighting circuits with resistive and inductive properties, including mains voltage incandescent, neon and low-voltage incandescent connected through magnetic transformers or compatible electronic transformers.

Trailing Edge Dimmers

Dimmers for use with mains voltage incandescent and low-voltage incandescent fittings connected through trailing edge compatible electronic transformers.

Multipurpose Controllers

Controllers that include combinations of leading edge regulated outputs, ballast control outputs and switched outputs.

HF Ballast Controllers

Controllers for use with fluorescent and incandescent lighting fixtures fitted with electronic 1-10V, DSI or DALI dimmable ballasts or transformers.

Relay Controllers

Controllers for switched on/off control of all load types.

LED Controllers

Controllers for LED light sources in architectural applications where creative colour mixing and sequencing is required.

Integration Devices

Networking devices and products to assist in integration to other systems.

Software & Accessories

System configuration, automation and user control PC software, power supplies and Dynalite DyNet data cable.

1

5

7

8

9

12

15

16

18

USER INTERFACES

Dynalite offer a vast range of user interfaces, from control panels to suit any budget and match any décor, to touch screens, timeclocks, sensors, remote controls and more.

Common Features

Dynalite interface devices all comprise an RS485 serial port for connection to the lighting control network. They are powered directly from the network and therefore do not require mains wiring.

User Control Panels

DRP & DRPE - Revolution Series



The contemporary Revolution Series user control panels incorporate a revolutionary clip-on cover fastening system, providing the ultimate in aesthetic design flexibility. Incorporating a unique button depth adjustment facility, the panels can accommodate covers of practically any flat architectural surface medium ranging in thickness from 1.2mm to 6.5mm. Glass, stone, wood, metal, ceramic... the options are endless.

- Available in the two standard international mounting formats, in single and multi-gang configurations
- From 1 to 24 buttons on single, double & triple gang plates
- Rear-lit engravable buttons for clear identification of function
- Button Colours; Charcoal Grey, Silver or White
- LED Status Indicators; Blue as standard, other colours available
- Integrated IR receive capability
- Front Cover finishes; Stainless Steel, White Glass & Black Glass as standard, an infinite number of options available

DPN & DPNE - The Classic Dynalite Stainless Steel Series

The workhorse of the Dynalite range and particularly well-suited to a commercial environment, these robust panels are available with or without concealed fixings. The Classic series is available in two standard international mounting formats in both single & multi-gang configurations. The panels can be customised to provide a multitude of control options, including buttons, faders, keyswitches and custom engraving on either buttons or metalwork.

- Smooth action switches with LED indicator provide tactile & visual feedback
- Engravable buttons available in Silver (standard), Black & Ivory
- Faceplate finished in 1.6mm stainless steel, other finishes such as gold-plate and powder coat also available.
- Control options include buttons, faders, key switches and custom engraving.

DLP & DLPE - Standard Dynalite Series

The DLP panels come as standard with a contemporarily-styled electric white coverplate and white buttons; the DLPE with a brushed stainless steel and charcoal buttons. A range of alternate cover finishes is available.

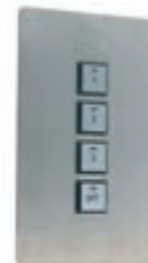
- Available in button configurations from 1 to 10 buttons
- 2 grid plates available, 1 column of 5 buttons & 2 columns of 5 buttons
- Smooth action switches with LED indicator provide tactile & visual feedback
- Engravable buttons
- Green status LED on each button, optionally available in blue or red
- Optional inbuilt infra-red receiver



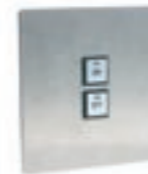
DRP



DRPE



DPN-SF



DPNE-SF



DLP



DLPE

USER INTERFACES

DPWE - Slimline Series

The Slimline range of panels utilises the same basic design as the Standard Series, with the additional advantage of a stylish low-profile coverplate. Available only in UK/European mounting configuration as illustrated, the panels can be supplied with a plasterboard clip or stud bracket for mounting.

- Available with 1 to 10 buttons
- 2 gridplates available, 1 column of 5 buttons & 2 columns of 5 buttons
- Smooth action switches with LED indicator provide tactile & visual feedback
- Engravable buttons
- Green status LED on each button, optionally available in blue or red
- Optional Inbuilt infra-red receiver



Touch Screens, Sensors & Timeclocks

DTK600 - Dynalite Touch Screen

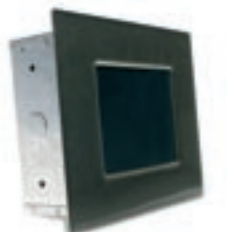
- High resolution touch sensitive mono-chrome LCD with backlight
- CGA (320x240) resolution
- 256 pages
- Easy setup from PC
- Inbuilt Programmable Logic Controller (64 Tasks)
- 365 day real time clock with sunrise/sunset & daylight saving features
- DMX512 transmit up to 512 channels
- RS485 serial port, supports DyNet & DMX512
- Memory 8Kb EEPROM, 512Kb DRAM, 1024Kb FLASH
- Screen size H 84.5mm x W 113.5mm

Panel Dimensions:

- Exposed H 166mm x W 206mm x D 17mm
- Hidden incl. Wallbox H 140mm x W 187mm x D 50mm
- Packed weight 1.7kg
- Option - DTK600SS
- Stainless steel surround



DTK600



DTK600-SS

DPP601 - Dynalite Portable Programmer

- Programs & overrides control system
- 122 x 32 pixel backlit LCD display
- Controls 256 areas, each up to 255 channels, 170 presets
- Dimensions H 81mm x W 145mm x D 24mm
- Packed weight 0.427kg



USER INTERFACES

DUS704C - Multifunction Sensor - Ceiling Mount

- Multifunction fully programmable sensor
- All functions remotely programmable

Wide Angle 360° Ceiling Mount PIR Motion Detector

- Detection range 13m diameter
- Mounting height: 2.1m to 5.0m (2.4m optimum), on ceiling
- LED activation indicator
- Adjustable Pulse Count
- Adjustable Sensitivity
- Detection zones: 34 dual element zones
- Sensor: Dual element pyro-electric
- R.F.I. Immunity: >15V/m @ 10-1,000MHz

PE Cell for Light Measurement

- Dynamic range <5 lux to >5,000 lux
- Automatic "Daylight Harvesting" mode
- Standard functions for proportional and multi-threshold illumination control

Infra-red Remote Control Receiver

- Range >6m
- LED activation indicator
- Can be used with DTK500 series infra-red remotes or other learning IR Remote controls

- Dimensions Diameter 102mm x D 30mm
- Packed weight 0.1kg



DUS704W - Multifunction Sensor - Wall Mount

- Multifunction fully programmable sensor
- All functions remotely programmable

Wide Angle Wall Mount PIR Motion Detector

- Detection range 15m x 15m
- Mounting height: 2m to 3m, on wall or corner
- LED activation indicator
- Adjustable Pulse Count
- Adjustable Sensitivity
- Detection zones: 20 dual element zones
- Sensor: Dual element pyro-electric
- R.F.I. Immunity: >15V/m @ 10-1,000MHz
- Optional lens: 30m Narrow Long Range and 15m Curtain

PE Cell for Light Measurement

- Dynamic range <5 lux to >5,000 lux
- Automatic "Daylight Harvesting" mode
- Standard functions for proportional and multi-threshold illumination control

Infra-red Remote Control Receiver

- Range >6m
- LED activation indicator
- Can be used with DTK500 series infra-red remotes or other learning IR remote controls

- Dimensions H 80mm x W 60mm x D 50mm
- Packed weight 0.1kg



USER INTERFACES

DTS900 - Dynalite Temperature Sensor

- Measures ambient temperature, provides data to other controllers
- Range 0° to 50°C, accuracy +/- 1°C
- Bi-colour LED status indicator
- Also available with user-adjustable setpoint knob (DTS900M)
- Dimensions H 71mm x W 71mm x D 25mm
- Packed weight 0.11kg



DTS900



DTS900M

DTC602 & DTCE602 - Dynalite Timeclock

- Control 255 areas, 255 channels per area, 96 scenes per area, 250 events, 16 tasks (sequences)
- Fade times from instant to 20 minutes
- Each event selective of the time and number of active days in a week
- Sunrise and sunset & daylight saving capability
- Complex sequencing control of lighting
- Password (PIN) locking of panel for security
- Supported by PC software, for easy configuration allowing local over-ride of lighting levels
- Real time clock with battery backup
- Large LCD screen for monitoring
- Utilises EEPROM memory for 100 year memory life without power
- Available in the two standard international mounting configurations:
 - DTC602 H 115mm x W 164mm x D 24mm (Aus/US Mounting Configuration)
 - DTCE602 H 86mm x W 146mm x D 24mm (UK/Euro Mounting Configuration)
- Packed weight 0.2kg



DTC602



DTCE602

DTK500 - Dynalite Remote Controls

- Available in 4, 6, 8, 10 & 12 buttons
- Used with DUS704W & DUS704C infra-red receivers



LEADING EDGE DIMMERS

Dimmers for regulating lighting circuits with resistive and inductive properties, including mains voltage incandescent, neon and low-voltage incandescent connected through magnetic transformers or compatible electronic transformers.

Common Features

- DyNet RS485 Serial Port
 - Up to 255 presets*
 - Up to 23 hour fade for each DyNet message*
 - Panic override and join functions
 - Power conditioning including; overvoltage protection, surge protection, brownout/sag protection, spike protection, soft start, 16 bit fade resolution (65,535 steps)
- * dependent on specific model

DIN Rail Mount

DDMC801 - 8 x 1A Leading Edge Dimmer

- 230V 50/60Hz single phase supply at 10A
- 8 x outputs at 1A, dimmed or switched (module dependent)
- Will accept 2 x output modules, which are plug in for ease of service
- Available output modules include:
 - 4 x 1A dimmer module (LSDM401)
 - 4 x 1A relay module (LSRM401)
 - 1 x 5A dimmer module (LSDM105)
 - 2 x 3 speed fan controller (LSFCM202)
- Programmable Logic Controller (8 Tasks)
- 365 day time clock with sunrise/sunset & daylight saving functions
- Dimensions H 86mm x W 209mm x D 66mm
- Packed weight 0.64kg



Wall Mount

DLE120-S - 1 x 20A Leading Edge Dimmer

- 230V 50/60Hz single phase supply at 20A
- 1 x dimmed output at 20A
- No sub circuit protection - feed from 20A MCB
- Rise time >200µs @230V
- 1 x RS485 serial port - DyNet & DMX512
- 8 x multi-function inputs; each programmable to 0-5V, 0-10V or dry contact
- Programmable Logic Controller (8 tasks)
- Dimensions H 320mm x W 225mm x D 75mm
- Packed weight 3.5kg



DLE405 - 4 x 5A Leading Edge Dimmer

- 230V 50/60Hz single phase supply at 20A
- 4 x dimmed outputs at 5A
- Each output protected by a 6A MCB
- Rise time >200µs @230V
- Dimensions H 320mm x W 225mm x D 75mm
- Packed weight 4.2kg



LEADING EDGE DIMMERS

DLE410 - 4 x 10A Leading Edge Dimmer

- 230V 50/60Hz single phase supply at 40A
- 4 x dimmed outputs at 10A
- Each output protected by a 10A MCB
- Robust SCR module regulating device
- Rise time >200µs @230V
- Dimensions H 350mm x W 220mm x D 120mm
- Packed weight 8.8kg



DLE1203 - 12 x 3A Leading Edge Dimmer

- 230V 50/60Hz single phase supply at 32A
- 12 x dimmed outputs at 3A. Total device load 32A
- 2 blocks of 6 channels, each protected by a 16A MCB
- Rise time >100µs @230V
- Dimensions H 455mm x W 225mm x D 75mm
- Packed weight 6.0kg



DLE1205 - 12 x 5A Leading Edge Dimmer

- 230V 50/60Hz single phase supply at 40A
- 12 x dimmed outputs at 5A. Total device load 40A
- Each output protected by a 6A MCB
- Rise time >200µs @230V
- Dimensions H 555mm x W 220mm x D 120mm
- Packed weight 13.5kg



LEADING EDGE DIMMERS

DLE1210 - 12 x 10A Leading Edge Dimmer

- 230V 50/60Hz three phase & neutral supply at 40A per phase
- 12 x dimmed outputs at 10A
- Each output protected by a 10A MCB
- Rise time >200µs @230V
- 1 x RS485 serial port - DyNet & DMX512
- 8 x multi-function inputs; each programmable to 0-5V, 0-10V or dry contact
- Dimensions H 600mm x W 345mm x D 187mm
- Packed weight 30.0kg



DLE1220GL-S - 12 x 20A Leading Edge Dimmer

- 230V 50/60Hz three phase & neutral supply at 63A per phase
- 12 x dimmed outputs at 20A. Total device load 189A
- Each output protected by a 20A MCB
- Robust SCR module regulating device
- Rise time >200µs @230V
- 1 x RS485 serial port - DyNet & DMX512
- 8 x multi-function inputs; each programmable to 0-5V, 0-10V or dry contact
- Dimensions H 600mm x W 345mm x D 187mm
- Packed weight 35.0kg



TRAILING EDGE DIMMERS

Dimmers for use with mains voltage incandescent and low voltage incandescent fittings connected through trailing edge compatible electronic transformers.

DTE310 - 3 x 10A Trailing Edge Dimmer

- 230V 50/60Hz single phase supply at 30A **or**; three phase & neutral supply at 10A per phase
- 3 x dimmed outputs (trailing edge phase control) at 10A
- Each output protected by a 10A MCB
- Regulating device - IGBT 1200V, 57A nom., 200A surge
- Fall time >200µs @230V
- 1 x RS485 serial port - DyNet & DMX512
- 8 x multi-function inputs; each programmable to 0-5V, 0-10V or dry contact
- Dimensions H 450mm x W 225mm x D 75mm
- Packed weight 3.5kg



MULTIPURPOSE CONTROLLERS

Controllers that include combinations of leading edge regulated outputs, ballast control outputs and switched outputs

Common Features

- RS485 DyNet Serial Port
- AUX input for panic override, join and other programmable functions

DIN Rail Mount

DDMC801 - Multipurpose Controller

- 230V 50/60Hz single phase supply at 10A
- 8 x outputs at 1A, dimmed or switched (module dependent)
- Will accept 2 x output modules, which are plug-in for ease of service
- Available output modules include:
 - 4 x 1A dimmer module (LSDM401)
 - 4 x 1A relay module (LSRM401)
 - 1 x 5A dimmer module (LSDM105)
 - 2 x 3 speed fan controller (LSFCM202)
- Programmable Logic Controller (8 Tasks)
- 365 day time clock with sunrise/sunset & daylight saving functions
- Dimensions H 86mm x W 209mm x D 66mm
- Packed weight 0.64kg



DDBC400 - Multipurpose Controller

- 230V 50/60Hz single phase supply at 5A
- 4 x outputs at 1A, dimmed or switched (module dependent) & 4 x outputs DSI/1-10V Ballast control (fixed module)
- Will accept 1 x output module, which is plug-in for ease of service
- Available output modules include:
 - 4 x 1A dimmer module (LSDM401)
 - 4 x 1A relay module (LSRM401)
 - 1 x 5A dimmer module (LSDM105)
 - 2 x 3 speed fan controller (LSFCM202)
 - 4 x DSI/1-10V Ballast module (fixed)
- Programmable Logic Controller (8 Tasks)
- 365 day time clock with sunrise/sunset & daylight saving functions
- Dimensions H 86mm x W 209mm x D 66mm
- Packed weight 0.67kg



Wall Mount

DMC805 - Multipurpose Controller

- 230V 50/60Hz single phase supply at 40A
- 4 x leading edge dimmed outputs at 5A. Total device load 40A
- Dimmed channel rise time >200µs @230V
- 4 x switched outputs at 10A (total switched output load 20A)
- 4 x HF Ballast control outputs, each selectable to 1-10V or DSI
- Each block of 4 channels protected by a 20A MCB
- Dimensions H 455mm x W 225mm x D 75mm
- Packed weight 5.3kg



HF BALLAST CONTROLLERS

Controllers for use with fluorescent and incandescent lighting fixtures fitted with electronic 1-10V, DSI or DALI dimmable ballasts or transformers

Common Features

- DyNet RS485 Serial Port
- Up to 255 Presets*
- Up to 23 hour fade for each DyNet message*
- Panic override and join functions
- * dependent on specific model

DIN Rail Mount

DDBC100-DALI - DALI HF Ballast Controller

- 230V 50/60Hz single phase supply at <0.1A
- 1 x DALI control output, supporting a full DALI universe of 64 channels, including diagnostic back channel
- Diagnostics include:
 - Lamp failure reporting
 - Ballast failure reporting
 - Ballast run time tracking for each ballast
 - Device Online/Offline status
- 1 x AUX programmable dry contact input
- Internal DALI bus power supply
- 1 x RS485 serial port - DyNet & DMX512
- Dimensions H 86mm x W 105mm x D 58mm
- Packed weight 0.324kg



DDBC320-DALI - DALI HF Ballast Controller

- 230V 50/60Hz single phase supply at 0.1A
- 3 x DALI control outputs, each supporting a full DALI universe of 64 channels (192 total), including diagnostic back channel
- Diagnostics include:
 - Lamp failure reporting
 - Ballast failure reporting
 - Ballast run time tracking for each ballast and the switched output
 - Device Online/Offline status
- 3 x 20A feed through switched circuits for DALI ballast mains supply
- 1 x AUX programmable dry contact input
- Internal DALI bus power supply
- 1 x RS485 serial port - DyNet & DMX512
- Dimensions H 86mm x W 209mm x D 66mm
- Packed weight 0.8kg



DDBC400 - Multipurpose Controller

- 230V 50/60Hz single phase supply at 5A
- 4 x outputs at 1A, dimmed or switched (module dependent) & 4 x outputs DSI/1-10V Ballast control (fixed module)
- Will accept 1 x output module, which is plug-in for ease of service
- Available output modules include:
 - 4 x 1A dimmer module (LSDM401)
 - 4 x 1A relay module (LSRM401)
 - 1 x 5A dimmer module (LSDM105)
 - 2 x 3 speed fan controller (LSFCM202)
 - 4 x DSI/1-10V Ballast module (fixed)
- Programmable Logic Controller (8 Tasks)
- 365 day time clock with sunrise/sunset & daylight saving functions
- Dimensions H 86mm x W 209mm x D 66mm
- Packed weight 0.67kg



HF BALLAST CONTROLLERS

DDBC1200 - 0-10V, DSI & DALI Broadcast HF Ballast Controller

- 230V 50/60Hz single phase supply at <0.1A
- 12 x control outputs, selectable to DSI/0-10V or DALI broadcast
- Up to 100 DSI or 0-10V ballasts per control circuit, 1200 ballasts total per unit
- Up to 64 DALI ballasts per control circuit or maximum 500 total per unit
- Can control 1-10V HF ballasts when used with a relay controller
- LED status indicators for each channel
- Programmable Logic Controller (8 Tasks)
- Dimensions H 86mm x W 209mm x D 66mm
- Packed weight 0.6kg



Wall Mount

DMC805 - Multipurpose Controller

- 230V 50/60Hz single phase supply at 40A
- 4 x leading edge dimmed outputs at 5A. Total device load 40A
- Dimmed channel rise time >200uS @230V
- 4 x switched outputs at 10A (total switched output load 20A)
- 4 x HF Ballast control outputs, each selectable to 1-10V or DSI
- Each block of 4 channels protected by a 20A MCB
- Dimensions H 455mm x W 225mm x D 75mm
- Packed weight 5.3kg



DBC410 - 1-10V & DSI HF Ballast Controller

- 230V 50/60Hz single phase supply at 40A
- 4 x switched outputs at 10A
- Each output protected by a 10A MCB
- 4 x HF ballast control outputs, each selectable to 1-10V or DSI
- Dimensions H 320mm x W 225mm x D 75mm
- Packed weight 4.0kg



HF BALLAST CONTROLLERS

DBC1205 - 1-10V & DSI HF Ballast Controller

- 230V 50/60Hz single phase supply at 60A **or**; three phase & neutral supply at 20A per phase
- 12 x switched outputs at 5A
- 12 x HF ballast control outputs, each selectable to 1-10V or DSI
- 3 blocks of 4 channels, each protected by a 20A MCB
- Dimensions H 455mm x W 225mm x D 75mm
- Packed weight 5.2kg



DBC1210 - 1-10V & DSI HF Ballast Controller

- 230V 50/60Hz three phase & neutral supply at 40A per phase
- 12 x switched outputs at 10A
- 12 x HF ballast control outputs, each selectable to 1-10V or DSI
- Each output protected by a 10A MCB
- Dimensions H 555mm x W 200mm x D 125mm
- Packed weight 10.25kg



DBC1220 - 1-10V & DSI HF Ballast Controller

- 230V 50/60Hz three phase & neutral supply at 63A per phase
- 12 x switched outputs at 20A. Total device load 189A
- 12 x HF ballast control outputs, each selectable to 1-10V or DSI
- Each output protected by a 20A MCB
- Dimensions H 555mm x W 200mm x D 125mm
- Packed weight 10.25kg



RELAY CONTROLLERS

Controllers for switched on/off control of all load types.

Common Features

- DyNet RS485 Serial Port
- Programmable dry contact AUX input
- Up to 255 Presets*
- Up to 23 hour fade for each DyNet message*
- Panic override and join functions
- * dependent on specific model

DIN Rail Mount

DDRC410FR - 4 x 10A Relay Controller

- 230V 50/60Hz single phase supply at <0.1A
- 4 x switched feed thru outputs at 10A (inductive)
- Override switch and status indicator for each channel
- 1 x RS485 serial port - DyNet & DMX512
- Programmable Logic Controller (8 Tasks)
- Dimensions H 86mm x W 105mm x D 58mm
- Packed weight 0.8kg



DDRC620FR - 6 x 20A Relay Controller

- 230V 50/60Hz single phase supply at <0.1A
- 6 x switched feed thru outputs at 20A
- Programmable Logic Controller (8 Tasks)
- Dimensions H 86mm x W 209mm x D 66mm
- Packed weight 1.0kg



DDRC810 - 8 x 10A Relay Controller

- 230V 50/60Hz single phase supply at 20A
- 8 x switched outputs at 10A. Total device load 20A
- Programmable Logic Controller (8 Tasks)
- Dimensions H 86mm x W 209mm x D 66mm
- Packed weight 0.82kg

Optional -MOT version also includes:

- 365 day time clock with sunrise/sunset & daylight saving functions
- Bypass switches (on/off/auto) for each channel
- LED status indicators for each channel
- Diagnostic LED and service switch on front panel



DDRC810DT - 8 x 10A Relay Controller

- 230V 50/60Hz single phase supply at <0.1A
- 8 x switched outputs at 10A. Total device load 40A
- Relay outputs are dry contact single pole double throw (SPDT)
- Programmable Logic Controller (8 Tasks)
- Dimensions H 86mm x W 209mm x D 66mm
- Packed weight 0.82kg

Optional - MOT version also includes:

- 365 day time clock with sunrise/sunset & daylight saving functions
- Bypass switches (on/off/auto) for each channel
- LED status indicators for each channel
- Diagnostic LED and service switch on front panel



RELAY CONTROLLERS

DDRC820FR - 8 x 20A Relay Controller

- 230V 50/60Hz single phase supply at <0.1A
- 8 x switched feed thru outputs at 20A (inductive)
- Override switch and status indicator for each channel
- 1 x RS485 serial port - DyNet & DMX512
- Programmable Logic Controller (8 Tasks)
- Dimensions H 86mm x W 209mm x D 66mm
- Packed weight 1.0kg



DDRC1210FR - 12 x 10A Relay Controller

- 230V 50/60Hz single phase supply at <0.1A
- 12 x switched feed thru outputs at 10A (inductive)
- Override switch and status indicator for each channel
- 1 x RS485 serial port - DyNet & DMX512
- Programmable Logic Controller (8 Tasks)
- Dimensions H 86mm x W 209mm x D 66mm
- Packed weight 1.0kg



Wall Mount

DRC810DT - 8 x 10A Relay Controller

- 230V 50/60Hz single phase supply at <0.1A
- 8 x switched outputs at 10A
- Relay outputs are dry contact single pole double throw (SPDT)
- 8 x multi-function inputs; each programmable to 0-5V, 0-10V or dry contact
- 1 x RS485 serial port - DyNet & DMX512
- Programmable Logic Controller (8 Tasks)
- Dimensions H 320mm x W 225mm x D 75mm
- Packed weight 3.5kg



RELAY CONTROLLERS

DRC1205 - 12 x 5A Relay Controller

- 230V 50/60Hz single phase supply at 60A or; three phase & neutral supply at 20A per phase
- 12 x switched outputs at 5A
- 3 blocks of 4 channels, each protected by a 20A MCB
- Dimensions H 455mm x W 225mm x D 75mm
- Packed weight 4.8kg



DRC1210 - 12 x 10A Relay Controller

- 230V 50/60Hz three phase supply at 40A per phase
- 12 x switched outputs at 10A
- Each output protected by a 10A MCB
- 4 x 0-5V/0-10V DC analogue control inputs
- Dimensions H 555mm x W 200mm x D 125mm
- Packed weight 10.25kg



DRC1220 - 12 x 20A Relay Controller

- 230V 50/60Hz three phase & neutral supply at 63A per phase
- 12 x switched outputs at 20A. Total device load 189A
- Each output protected by a 20A MCB
- 4 x 0-5V/0-10V DC analogue control inputs
- Dimensions H 555mm x W 200mm x D 125mm
- Packed weight 10.25kg



LED CONTROLLERS

Controllers for LED light sources in architectural applications where creative colour mixing and sequencing is required

DIN Rail Mount

DDLEDC401 - LED Controller

- 230V 50/60Hz single phase supply at 5A
- 4 x 1A constant voltage PWM outputs
- Outputs selectable to 12V/24V/Common Anode/Common Cathode
- 1 x RS485 serial port - DyNet & DMX512
- Dimensions H 86mm x W 209mm x D 66mm
- Packed weight 1.0kg



DDLEDC605 - LED Controller

- Requires external 20A regulated power supply, enabling a range of nominal output voltages
- Controller supply voltage range selectable with internal link to 18-32V DC (standard) or 12-15VDC.
- 6 x 5A voltage mode common anode PWM outputs
- 1 x RS485 serial port - DyNet & DMX512
- Dimensions H 86mm x W 209mm x D 66mm
- Packed weight 1.0kg



DDLEDC60035 - LED Controller

- Requires external 2.5A regulated power supply
- Controller supply voltage range selectable with internal link to 18-32V DC (standard) or 12-15V DC
- 6 x 350mA current mode common anode PWM outputs
- Minimum internal voltage drop 200mV
- 1 x RS485 serial port - DyNet & DMX512
- Dimensions H 86mm x W 209mm x D 66mm
- Packed weight 1.0kg



Wall Mount

DLEDC48 - LED Controller

- 230V 50/60Hz single phase supply at 1A
- 48 x (16 x RGB) current mode common anode PWM outputs
- RJ12 socket load connection, 3 channels per socket
- 1 x RS485 serial port - DyNet & DMX512
- Dimensions H 455mm x W 225mm x D 75mm
- Packed weight 6.2kg



INTEGRATION DEVICES

Networking devices and products to assist in integration to other systems.

DNG100BT – 10/100Base T Ethernet Interface

- Provides a TCP/IP gateway for controlling a Dynalite network
- Allows custom GUIs to be created in HTML and Flash and run on Smart Phones, PCs and Touch Screens
- Integral webserver for browser-based control
- 1 x RS485 serial port - DyNet
- 1 x 10/100Base T Ethernet Port
- Supports static and DHCP IP addressing
- Programmable Logic Controller (64 Tasks)
- Dimensions H 30mm x W 80mm x D 150mm
- Weight 0.15kg



DNG232 - Serial Port Interface

- DyNet to RS232 Gateway
- 1 x RS485 serial port - DyNet
- 1 x RS232 serial port - can be programmed to transmit custom data
- Pre-programmed "Plain English" text interpreter mode
- Pre programmed Remote Access Modem mode
- RS232 Baud rate: 600 - 460800
- RS232 Max packet length: 254 bytes
- Programmable Logic Controller (64 Tasks)
- Dimensions H 30mm x W 80mm x D 150mm
- Packed weight 0.15kg



DTK502 - Dry Contact Interface

- Designed to fit into third party devices to allow operation on a DyNet network
- 1 x RS485 serial port - DyNet
- 4 x dry contact inputs
- Small enough to fit into 3rd party motion sensors
- Firmware supports special "motion detector" mode
- Dimensions H 19mm x W 40mm x D 19mm
- Packed weight 15.5grams



DNG485 – Network Bridge

- 230V 50/60Hz single phase supply at <0.1A
- 2 x RS485 serial ports - DyNet
- 3.75KV RMS optical isolation between ports
- Programmable message filtering
- Programmable Logic Controller (64 Tasks)
- DMX512 receive & convert to DyNet – 64 channels
- DyNet to DyNet II translation
- DyNet network power supply - 630mA
- Dimensions H 320mm x W 225mm x D 75mm
- Weight 3.1kg



DTK932V7 - Network Bridge

- 230V 50/60Hz single phase supply at 0.25A
- 2 x RS485 serial ports - DyNet & DMX512 Transmit (512 channels)
- 3.75KV RMS optical Isolation between ports
- Programmable message filtering
- Programmable Logic Controller (64 Tasks)
- 365 day time clock with 250 events, sunrise/sunset & daylight saving functions
- Memory: 8Kb EEPROM, 512Kb DRAM, 1024Kb FLASH
- Dimensions H 320mm x W 225mm x D 70mm
- Packed weight 3.1kg



INTEGRATION DEVICES

DIR-TX8 - Infra-red Transmitter

- 8 independent, individually controllable outputs
- 4 x 3.5mm stereo jack connector, accepts stereo & mono plugs
- 1 x IR input, used for learning & saving unknown IR codes
- 1 x RS485 serial port - DyNet
- 1 x AUX programmable dry contact input
- Programmable Logic Controller (64 Tasks)
- Powered from the DyNet network
- Dimensions: H 30mm x W 80mm x D 150mm
- Packed weight 0.15kg
- DIR-EM2 supplied separately



DIR-EM2



DIR-TX8

DDMIDC8 - Dry Contact/Voltage Input Interface

- 8 x Opto Isolated inputs, each configurable to dry contact or 0-24V AC/DC inputs
- 4 x 0-10V DC analogue non-isolated inputs
- 1 x RS485 serial port - DyNet
- LED status indicators for each opto isolated input
- Programmable Logic Controller (8 Tasks)
- Powered from the DyNet network
- Can be mounted on DIN rail, also has provision for screw fixing to a wall without the use of DIN rail
- Dimensions H 86mm x W 105mm x D 58mm
- Packed weight 0.324kg



DDNG485 - Network Gateway

- Communications gateway from DyNet RS485 networks
- 2 x RS485 serial ports - DyNet
- 3.75KV RMS optical isolation between ports
- Programmable message filtering
- DMX512 receive & convert to DyNet (64 channels)
- Programmable Logic Controller (64 Tasks)
- DyNet to DyNet II Translation
- Powered from the DyNet network
- Can be mounted on DIN rail, also has provision for screw fixing to a wall without the use of DIN rail
- Dimensions H 86mm x W 105mm x D 58mm
- Packed weight 0.324kg



DDNI-LON - DyNet to LON Interface

- DyNet to LON interface
- 1 x RS485 serial port - DyNet
- 1 x TP/FTT10A twisted pair LONWorks port
- Supports 63 SNVTs
- Powered from the DyNet network
- Dimensions H 86mm x W 105mm x D 58mm
- Packed weight 0.6kg



SOFTWARE & ACCESSORIES

System configuration, automation and user control PC software, power supplies and Dynalite DyNet data cable.

DLight III MapView - End User Control Software

- User-friendly master control and reporting software
- Utilises site plans as floor plan backdrops for ease of navigation
- Preset scenes can be recalled and programmed
- Timeclock allows one time and recurring events to be easily scheduled
- Smart icons automatically reflect the state of each device in real time
- Status reflection of the system, such as alarm events like circuit breaker trips and lamp failures, diagnostic and maintenance data such as lamp burn times are provided on screen as well as being sent to alerting services such as e-mail and pagers
- User security integrates with Windows Domain Security Groups and Users. Individual user Rights are configurable



DLight III Server - Gateway Integration Software

- Enables a high level interface to a Dynalite network via Ethernet - TCP/IP
- Industry standard DCOM interface
- Client/Server architecture for fast high-level integration to other services
- Automatically scans the network maintains a database of the network for high-speed information exchange, no network latency
- Supplied-with TrayPan client software, perfect solution for control of open plan office space using existing infrastructure
- System calls allow control & status reflection of the system, alarm events such circuit breaker trips and lamp failures, access to diagnostic and maintenance data such as lamp burn times
- Client Security uses Windows Domain Security Groups and Users. User Rights configurable
- Licence model used makes the product affordable for all system sizes
- DLight III Toolbox SDK available with DCOM calls specification, sample clients & source code for fast tracking integration projects



DCS - ControlSoft User Friendly Control Software

- Easy-to-use software package specifically designed for simple end user control of Dynalite lighting systems
- On Screen "Virtual Control panel" - that is completely user reprogrammable (ie: Virtual buttons with "English" names - "Foyer to Morning Setting", "Home Theatre to Audio Visual Mode" etc.)
- Scheduler - Easy-to-use "Calendar" of events, that the end-user can manipulate as required (ie: Whole House to Welcome mode at 5.15pm today, Foyer to Early Morning mode at 5.00am everyday except for 25/12/99, Garden Lighting Sequence to Late night Mode at 11.00pm every day except Sundays)
- Macro's - Easy-to-build Macro's that are assignable to any virtual button (ie: Office On Macro: Turn Office Lighting to On, Wait 3 seconds, Turn On Air Conditioner, Wait 1 Second, Open Curtains)
- Preset Level Settings - Now the client can easily program and re-program channel level settings within area presets in a user-friendly manner
- Client/Server - Ability to utilize the clients own LAN to control the Dynalite system so that any PC on their network can control any lighting/Control circuit/s
- Logging and Reporting - Ability to log to a standard MS Access data base all data regarding usage of Circuits, for calculation and reporting of "Lamp Burn" times, usage patterns, Automatic E-mail either internal or external of reports, fault reports, or usage data



DTK624 - DLight Configuration and End User Control Software

- Configures Dynalite equipment
- Diagnostic tools



DTK624-PACK - RS485 - RS232 PC Node Adaptor & Software

- Contains everything required to get started;
- 1 x DTK624 DLight CD
- 1 x DTK622 PC Node for connection of the Dynalite system to a computer
- 1 x "Dingus" RJ12 socket
- 2 x RJ12 patchleads



DTK622-232 - RS485 - RS232 PC Node Adaptor

- Used with DLight PC software, allows a PC to connect to the Dynalite network
- 1 x RS485 serial port - DyNet, accessible via 2 x paralleled RJ12 sockets
- 1 x RS232 DB9 connector on 1m long flylead cable for connection to PC
- Powered from the DyNet network
- Dimensions H 25mm x W 50mm x D 90mm



DTK622-USB - RS485 - USB PC Node Adaptor

- Used with DLight PC software, allows a PC to connect to the Dynalite network
- Supported OS: Windows - 98, ME, 2000, XP
- 1 x RS485 serial port - DyNet, accessible via 2 x paralleled RJ12 sockets
- 1 x USB type B connector, supplied with 1m long USB patchlead
- Powered from the DyNet network
- Dimensions H 25mm x W 50mm x D 90mm



DDNP1501-W - Network Power Supply

- DyNet DC Power Supply
- Supply 100V - 230V AC 15W
- Output 15V DC 1A Regulated
- Self-resetting overload protection, automatic thermal shutdown & short-circuit proof
- DIN Rail enclosure (circuit breaker profile), 4 units wide
- Perfect for supplementing DyNet DC supply when using Touch Panels



DDTC001- Network Timeclock

- 365 day clock with battery back up
- Sunrise/sunset tracking with daylight saving adjustment
- 250 timed events, 8 tasks
- Tamper proof
- Dimensions H 86mm x W 35mm x D 58mm
- Weight 0.3kg



DyNet Data Cable

- Used to create robust Dynalite RS485 networks
- 100MHz 100ΩSTP 4 pair CAT5E
- Shielded for maximum data integrity
- Conductors are stranded for easy termination on pressure plate screw terminals
- Outer sheath is 250 Volt rated
- Supplied in 305m rolls
- Carton Dimensions H 425mm x W 212mm x D 425mm • Carton weight 15.0kg





dynamite-online.com

HEAD OFFICE

Sydney Australia
6/691 Gardeners Road
Mascot NSW 2020
P: +61 2 8338 9899
F: +61 2 8338 9333
E: info@dynamite-online.com
W: dynamite-online.com

EUROPEAN OFFICE

Lodges Wood Oast
Goodley Stock Road
Westerham, Kent, UK TN16 1TW
P: +44 (0) 870 608 1101
F: +44 (0) 870 608 1102
E: info@dynamite.eu
W: dynamite.eu

For further information: